

OPEN SET SYSTEM

Easy-to-install Waterproofing Shower System

Installation Guide



ÍNDEX

The GURU products	Pag. 3
Contents, Description and characteristics	Pag. 4
Installation steps	Pag. 5
Manufacturer warranty	Pag. 11



THE GURU PRODUCTS

ESTIL GURÚ, S.L. is a Spanish company well-established in the construction industry whose growth has been achieved thanks to the manufacture and sale of waterproofing products using an innovative waterproof membrane, which has been carefully designed and extensively tested to guarantee perfect results. We named this waterproofing sheet WATER-STOP.

We were the first to manufacture a KIT with a waterproof barrier with the characteristics of WATER-STOP and integrated shower drain. And now GURU USA, L.L.C. sets a new standard in shower waterproofing products on the North American marketplace by launching the new easy-to-install and safer EVOLUX KIT which meets American Standards providing improvements over previous products.

GURU USA, L.L.C.



CONTENTS, DESCRIPTION AND CHARACTERISTICS

The GURU shower waterproofing OPEN SET comprises a section of WATER-STOP waterproofing membrane and the required accessories to properly install and connect waterproofing to any shower drain; getting a completely waterproofed shower pan ready to tile installation.

The shower waterproofing can be connected to standard clamping ring type drains thanks to DRAINFLASHING, a preformed drain flashing and height adapter. Waterproofing can also be installed with integrated bonding flange drains.

The connection to standard drains makes the GURU® shower waterproofing OPEN SET suitable for new construction and renovation.

WATER-STOP is a thin load bearing, bonded, sheet membrane for waterproofing applications which meets the American National Standard for Thin-Set Ceramic Tile and Dimension Stone Installations ANSI A118.10 for Load Bearing, Bonded, Waterproof Membranes and ANSI A118.12 for Crack Isolation Membranes.

We strongly recommend waterproofing shower walls with WATER-STOP membrane from GURU®, which is commercially available in rolls.

WATERPROOFING

OPEN SET includes:

- A 4' x 6' 7" (26 sq ft) –sized sheet of WATER-STOP waterproofing membrane.
- A preformed drain flashing 1/4" to 1-1/4" height adapter DRAINFLASHING
- 2 W-S DIN preformed in-corner.
- 2 W-S DEX preformed out-corner.
- 1 MIXING VALVE SEAL

WATER-STOP membrane, preformed drain flashing DRAINFLASHING, in-corner W-S DIN and out-corner W-S DEX are IAPMO listed products.



ACCESORIES FOR INSTALLATION

- Polyurethane or MS sealant adhesive tube.
- Multipurpose clear plastic template which include a separable part:
 - To help prepare DRAINFLASHING installation.
 - To cover the drain inlet during installation of the sloped mortar bed.
 - Positive weep-holes protector.



INSTALLATION STEPS

1. Prepare the area for installation.

Check local building codes before the installation to assure that your shower meets requirements

Frame shower walls, a curb or a recess in the floor and add wall blocking to create a shower base “box”.

If you are installing in wooden subfloor:

- Ensure your floor can support the weight of a shower before beginning construction because the concrete can be quite heavy.
- Install a cleavage membrane as for example roofing felt (tar paper) to cover the flat surface of the subfloor and cutting around the drain base. The felt will serve as a moisture barrier helping the mortar to retain moisture while curing.
- Add galvanized mesh to the bottom of the shower pan to reinforce the mud layer and help hold the mortar to the shower curb (if any). Secure with galvanized staples.



2. Install shower drain body (if not already installed)

WATER-STOP is a sheet-applied bonded waterproofing membrane that should be installed over the sloped mortar bed and is not required to be recessed, so it is not necessary to sit the drain body flush with the subfloor. It can be installed higher to set closer the clamping ring level to the mortar bed surface.

Dry fit the drain base to check length and fit.

Connect the drain to the waste pipe. Follow the manufacturer directions to connect the drain and pipe.

If drain is not set flush with the floor, the drain base flange must be supported. Place a ring of loose mortar up to the inlet hole in the floor and firmly press the drain into the mortar.

When installing integrated bonding flange drain, follow the manufacturer instructions to install the drain and sloped mortar bed.



3. Build the sloped mortar bed

When installing with a clamping ring type drain:

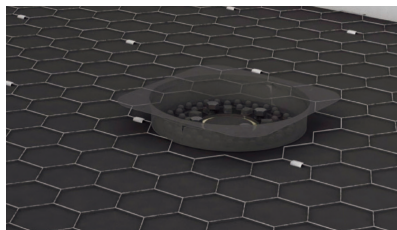
- Remove strainer and clamping ring.
- Place the plastic template over the drain base; align the holes in the template with the bolt holes in the installed drain flange. Re-insert and tighten the bolts.

Build a 1/4" per foot (2%) sloping mortar bed using floor mix mortar.

- Measure the distance from the furthest corner to the template edge. The mortar level at the shower wall at this point will be 1/4" per foot higher than the wanted height of the mortar surface at the template edge.

Using the top edge of the template as a guide allows 11/4" thickness of mud bed.

- Mark the shower walls with the proper height for the mortar. Use a level to continue this line around the entire shower. Pile mortar against the wall and compact it down to the line.
- Pile mortar around the template and compact it down to the planned height.
- Pour mortar up to the planned height or the top edge of the template. Continue adding mortar from the wall marks to the edge of the template until the entire pan is formed. Use the packed mortar as a guide for screed
- Finish the mortar surface smooth with a steel trowel and allow to dry overnight.



4. Install sealed and clamped to drain

Once the base has set, remove the installation template.

Apply 2 beads of polyurethane or MS sealant around the drain hole opening to seal between the drain body and the underside of the DRAINFLASHING.

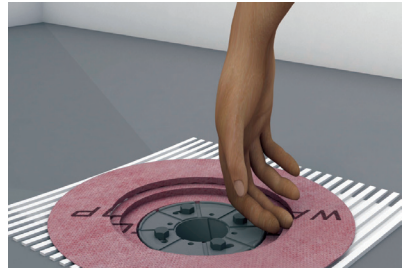
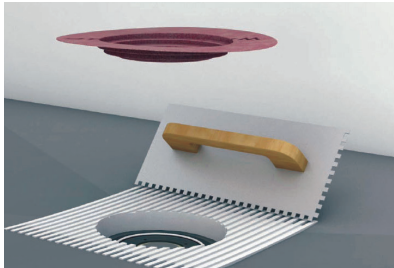




Apply a small amount of modified thin-set mortar in the wall of recess left by the template and to the floor area around it.

Lay DRAINFLASHING over the top of the drain, feel with your fingers the bolts holes and cut an "X" where each bolt will penetrate the membrane. Reset the drain clamping ring and tighten clamping ring bolts then bond the flashing piece by pressing to fit the shape. Embed the piece into bond coat.

Carefully cut a hole in the membrane to allow the drain grate to be threaded into the clamping ring.



5. Install WATER-STOP sheet over mortar layer

The waterproofing membrane should be one continuous piece, covering the entire pan, up the walls and over the curb, if any). Install the wall board before the membrane.

We strongly recommend waterproofing shower walls with WATER-STOP membrane which is commercially available in rolls.

Clean the mortar surface of the shower base to remove any potential abrasive debris that could damage the waterproofing membrane.

Lay the sheet of WATER-STOP over the cured shower base to determine the proper size prior to cutting it. Plan to carry the waterproofing sheet 4 - 6" up the walls and at least 3" higher than the curb (if any).



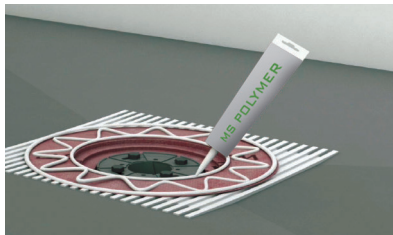
Once you are satisfied with the position of the waterproofing sheet, locate the drain hole by pushing down on the liner. Feel the edges of the drain recess and mark the spot on the WATER-STOP sheet. Remove the sheet from the shower and cut out the marked hole using a utility knife or similar.



Once you are satisfied with the position of the waterproofing sheet, locate the drain hole by pushing down on the liner. Feel the edges of the drain recess and mark the spot on the WATER-STOP sheet. Remove the sheet from the shower and cut out the marked hole using a utility knife or similar.



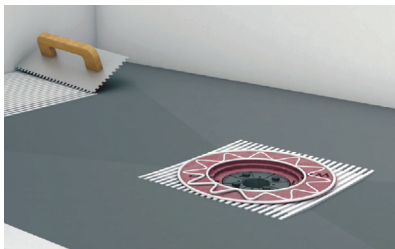
To seal between the drain flashing and the underside of the membrane apply 2 continuous beads of polyurethane or MS sealant separated 2" in concentric circles around the drain hole opening and then a third drop interposed there between in a zig-zagged pattern.



Apply modified thin-set mortar to the floor area including the drain flashing bonding flange except the inner 2-3" area using a 1/8" to 1/4 (3 a 6 mm) V-notched trowel. In order to avoid trapping air under the sheet, trowel mortar in parallel rows across the width or length of the sheet.

Install the WATER-STOP membrane making sure to align the sheet and the previously cut hole.

Lay the WATER-STOP sheet into the fresh bonding material. Apply pressure to the membrane with the flat side of the trowel squeezing the sealant toward the drain hole and the thin-set mortar outward toward the sheet edges or the perimeter of the shower in an effort to achieve a 100% bond and coverage, thus eliminating air bubbles and voids between the membrane and substrate.

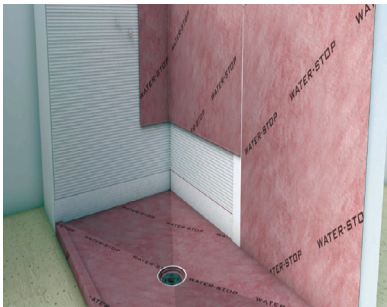




Extend up the wall to the correct height. Fold the corners. Do not cut the waterproofing membrane at the corners. Instead, fold the WATER-STOP sheet sticking the folds and tuck them into the thin-set mortar.

If you must cut the WATER-STOP sheet for out-corners or to avoid excessive material thickness in the corners, use provided W-S DEX preformed out-corner or W-S DIN preformed in-corner accessories to patch with polyurethane or MS sealant to cover the cuts.

Be certain to overlap the upturn sheet from floor at least 2" with the waterproofing of shower walls. We strongly recommended the waterproofing of shower walls with WATER-STOP membrane which is commercially available in rolls.



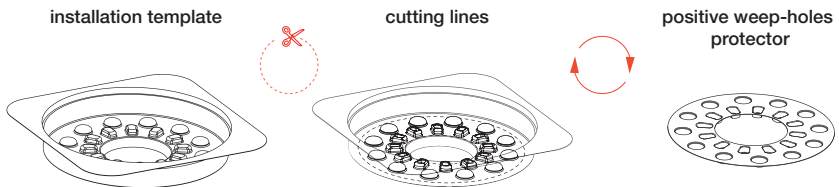
6. Water test

Water testing is recommended and may be required by applicable plumbing code to insure that shower pan is watertight prior to setting tile. Wait 24 hours before testing to allow for final set of the mortar to ensure waterproof performance of the assembly at seams and connections.

7. Assemble the strainer body

Protect weep holes from clogging with the provided positive weep-holes protector:

- Cut out the separable dimpled base of the template following the cutting lines. Use a utility knife or similar.



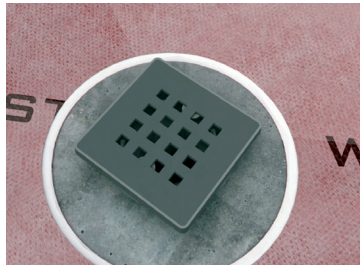
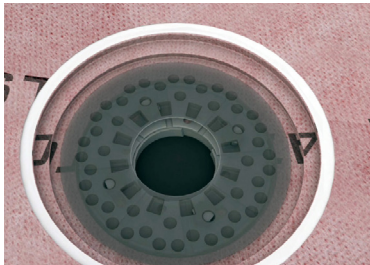


- Fill with mortar over the dimpled ring to level flush to the waterproofing membrane.

Lay a piece of the flooring tile to set a reference height for the installation.

Level, align and adjust the height according to floor tile thickness so that the upper edge is flush to the flooring.

- Place the obtained dimpled ring with blisters to down over the clamping ring.
- Install the drain assembly.



8. Install floor tile

Once the entire membrane with seams, corners, and connections has been completely bonded, and therefore waterproofed, the covering may be applied.

Install tile using the thin-bed method, apply thin-set mortar directly to the WATER-STOP surface and install the tiles. Complete coverage of WATER-STOP Membrane by the bond coat is required.

Seal the joint between the flooring and the strainer edge with polyurethane or MS sealant position the grill.

Set tile in accordance with TCNA Handbook recommendations, ANSI A108 standards and bond coat manufacturer's directions.

Refer to bond coat manufacturer's instructions for cure time and suitability and allow 50% additional time. Rapid-curing type of thin-set mortar may be used with approval of mortar manufacturer.





MANUFACTURER WARRANTY

Subject to the conditions and limitations as stated in this document, GURU USA, L.L.C warrants that GURU® Products will be free from manufacturing defects and will not rot, deteriorate or break down for a period of ten (10) years from the date of purchase when used and installed in accordance with the terms and conditions of the GURU® Product Data Sheets and industry standard guidelines.

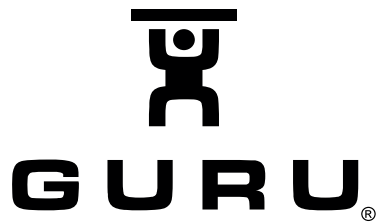
GURU USA, L.L.C sole liability under this warranty shall be limited, at its election to: a) the replacement of the product or b) pay an amount not to exceed the original square foot cost of the installation for replacement of the portion of the installation that involves the defective product. This payment will include all; GURU® materials, non-reusable tile surfaces, and the appropriate setting and grouting materials. GURU USA, L.L.C cannot guarantee or warrant an exact match to the specific tile, stone, or other flooring materials used in the installation.

GURU USA, L.L.C makes no other warranties either expressed or implied. This warranty gives you specific legal rights, and you may have other rights that vary from state to state or from one country/territory to another.

This Warranty extends only to the original intended owner and user and is not transferable.

To make a claim, the owner must provide GURU USA, L.L.C with written notice within 30 days of any alleged defect, together with date and proof of purchase of the products, proof of the costs of the original installation and name and address of all installers, failing which this Warranty shall be of no legal effect. GURU USA, L.L.C reserves the right at its election to inspect the alleged failed and defective condition.

Avis Technique 13/14-1258		Avis Technique 13/14-1259	
CERTIFICATE OF LISTING		CERTIFICATE OF LISTING	
The most updated information on this certificate is located on the IAPMO website at: www.iapmo.org		The most updated information on this certificate is located on the IAPMO website at: www.iapmo.org	
Effective Date: October 2012		Effective Date: August 2012	
Product: CHECK VALVE MOUNTING FOR TREN-SET		Product: Check Valve, Ball, Non-Return Valve and Drainage Valve	
Drawn By: David R. Rye, P.E.		Drawn By: David R. Rye, P.E.	
Reviewed By: Paul J. Smith, P.E.		Reviewed By: Paul J. Smith, P.E.	
Specified By: ASPE		Specified By: ASPE	
Identification: Check valve mounting shall be permanently marked with the manufacturer's name or trademark. Product shall also bear the IAPMO certification mark.		Identification: Check valve, ball, non-return valve and drainage valve shall be permanently marked with the manufacturer's name or trademark. Product shall also bear the IAPMO certification mark.	
Description: Check valve mounting for use on water supply and drainage pipe installation. To be installed in accordance with the manufacturer's instructions and the latest edition of the National Plumbing Code and the National Plumbing Code of Canada.		Description: Check valve, ball, non-return valve and drainage valve for use on water supply and drainage pipe installation. To be installed in accordance with the manufacturer's instructions and the latest edition of the National Plumbing Code and the National Plumbing Code of Canada.	
Product listed on this certificate has been tested by an IAPMO RWT recognized laboratory. This recognition has been granted based upon the laboratory's compliance to the applicable requirements of ISO/IEC 17025.		Product listed on this certificate has been tested by an IAPMO RWT recognized laboratory. This recognition has been granted based upon the laboratory's compliance to the applicable requirements of ISO/IEC 17025.	
Product are in compliance with the following standard: National Plumbing Code (NPC) National Plumbing Code of Canada		Product are in compliance with the following standard: National Plumbing Code (NPC) National Plumbing Code of Canada	



GURU USA, L.L.C.
2496 Creekway Dr, Columbus, OH 43207
PHONE: (614) 341 7002 - guru@guru-usa.com
www.guru-usa.com