

## W-S DRAINFLASH

W-S DRAINFLASH is a collapsible fitting with WATER-STOP membrane flange that can be installed varying its depth from  $\frac{1}{2}$ " to  $1\text{-}\frac{3}{4}$ ".

### Installation steps

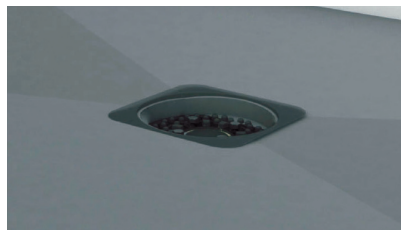
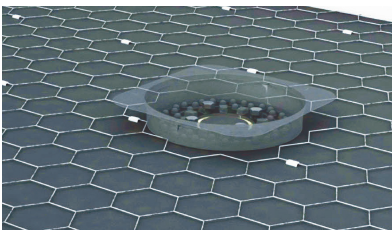
#### 1. Build the sloped mortar bed.

Remove strainer and clamping ring.

Place the plastic template over the drain base; align the holes in the template with the bolt holes in the drain flange. Re-insert and slightly tighten the bolts.

*Using the top edge of the template as a guide allows 1- $\frac{1}{4}$ " thickness of mud bed.*

Build a  $\frac{1}{4}$ " per foot (2%) sloping mortar bed around the template and compact it down.



Once the base has set, remove the installation template.

## 2. Install W-S DRAINFLASH sealed and clamped to drain.

Apply 2 beads of urethane sealant or MS polymer sealant around the drain hole to seal between the drain body flange and the underside of the W-S DRAINFLASH.

Apply a small amount of modified thin-set mortar in the recess left by the template and to the floor area around it.

Lay W-S DRAINFLASH over the top of the drain, reset the drain clamping ring and tighten clamping ring bolts then bond the flashing by pressing.

## 3. Install waterproofing.

To connect the drain flashing to waterproofing, apply 2 continuous beads of urethane sealant or MS polymer sealant in concentric circles, and then a third drop interspersed in a zigzag pattern.

## 4. Install the drain assembly.

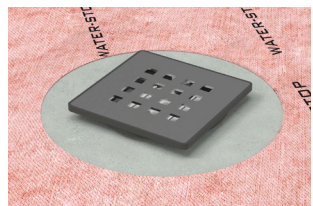
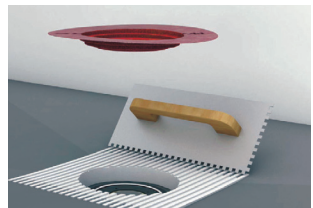
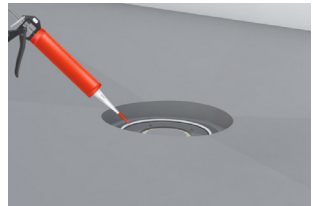
Protect weep holes from clogging with the provided positive weep-holes protector(\*):

- Cut out the detachable dimpled base of the template following the cutting lines.
- Place the obtained ring with blisters face down over the clamping ring.

Assemble the strainer body.

Fill with mortar over the dimpled ring to level flush to the waterproofing membrane.

## 5. Set floor tile.



\*

