

GURU
waterproofingproducts®

INSTALLATION GUIDE PRESLOPED SYSTEM

**W-S HEAVY DUTY SHOWER TRAY
FOR LINEAR DRAINS (TILEABLE / INTEGRA)**



UPGRADE YOUR INSTALLATION WITH GURU

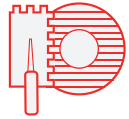
LINEAR DRAIN CONNECTOR



ABS



PVC



Bonding flange for superior thinset adhesion



Can be installed over existing drain flange



Quick system to install



Drain repositioning system up to 3/8"

EVOLUX DRAIN & STRAINER

LISA



16" to 60" |

PLUS



16" to 60" |

TEMPERED GLASS



28" & 36" |

INTEGRA



16 to 60" |

ZEN



24" |

ARTS

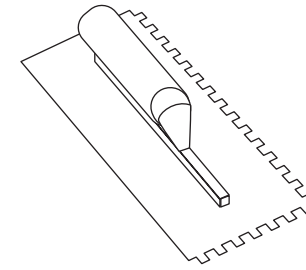


16 to 60" |

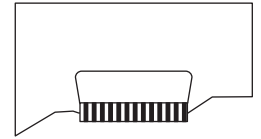
REQUIRED GURU TOOLS



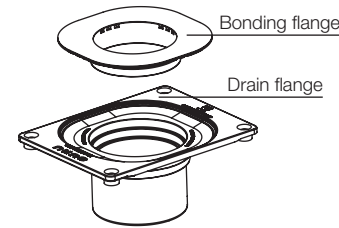
W-S Sealant



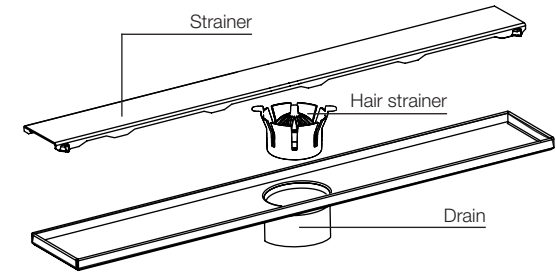
G-Trowel
1/4" x 1/4"



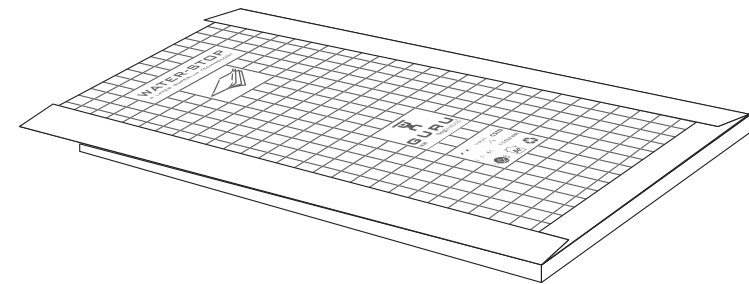
W-Spatula



Linear Drain Connector

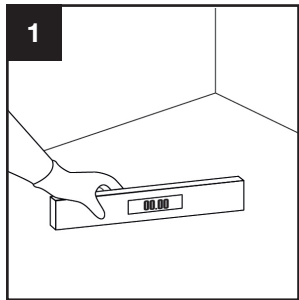


Evolux INTEGRA Drain & Strainer

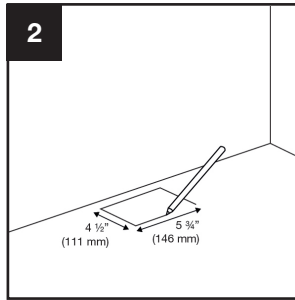


Pre-Sloped W-S Heavy Duty INTEGRA Shower Tray

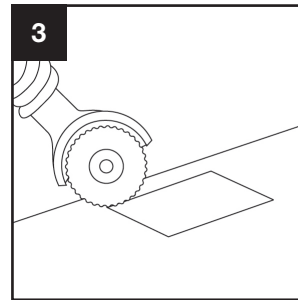
INSTALLATION FOR HD SHOWER TRAY - INTEGRA DRAIN



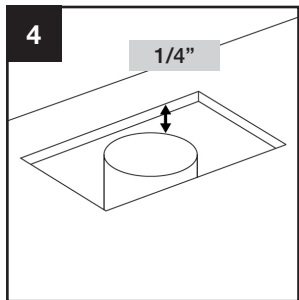
1. Verify shower conditions are in accordance with local codes.



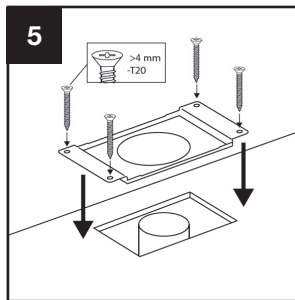
2. Position the tray marking the drain position center. Leave 1/2" gap from the studs to receive the structure and tile.



3. Cut a **4-1/2" x 5-3/4"** rectangle in the wood where the drainpipe connection is, or where the drain is going to be installed.

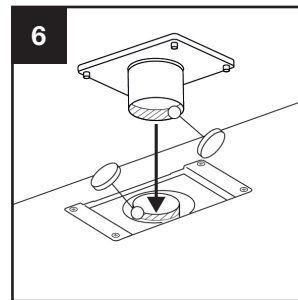


4. Verify the drainpipe is at least at **1/4"** of the substrate surface.



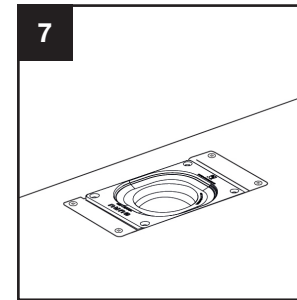
5. Screw the provided metal bracket in the floor with drive head screws non less than 4 mm – T20.

Note: In concrete substrate installations this step is not necessary.

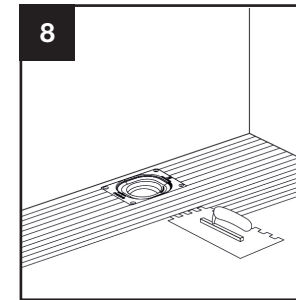


6. Glue the drain body to the 2" pipe pressing it to the minimum height (use adhesive depending on whether it is ABS – black or PVC – grey).

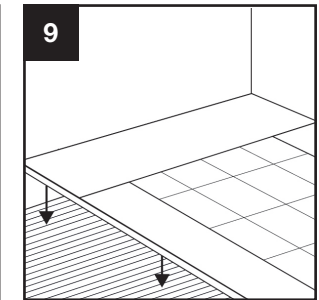
INSTALLATION FOR HD SHOWER TRAY - INTEGRA DRAIN



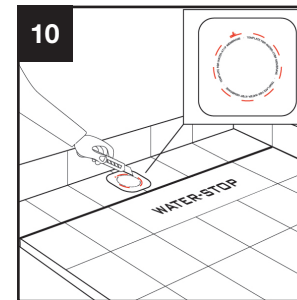
7. Make sure the drainpipe is flushed with the wood substrate.



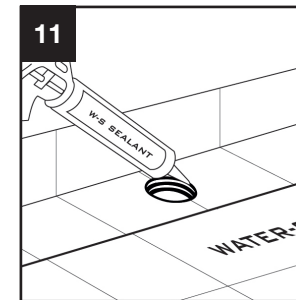
8. Apply thin-set (tile adhesive) with a 1/4"x 1/4" notched trowel from the shower perimeter to the drain. **RECOMMENDED THINSET ANSI A118.4, ANSI A118.11 and ANSI A118.15.**



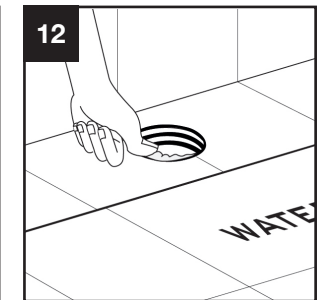
9. Set the SHOWER TRAY in top of the thin-set before it cures and apply pressure on top of it.



10. Use the provided template to cut a hole in the WATER-STOP sheet. Use a utility knife or scissors.

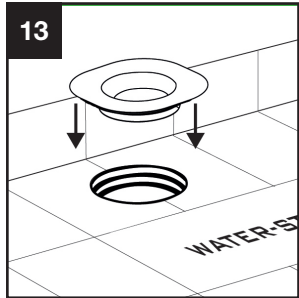


11. Lift the edge of the WATER-STOP sheet, insert the cannula of the W-S Sealant 1/2" and apply a continuous bead below the sheet.

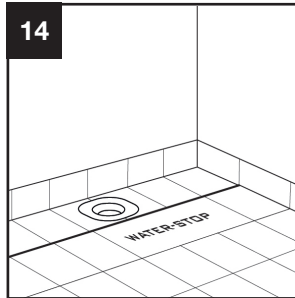


12. Press by hand to distribute the W-S Sealant and clean the excess material on the edge.

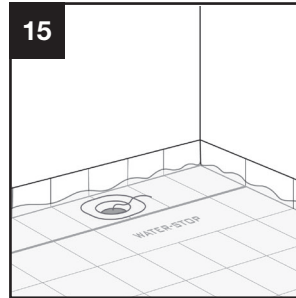
INSTALLATION FOR HD SHOWER TRAY - INTEGRA DRAIN



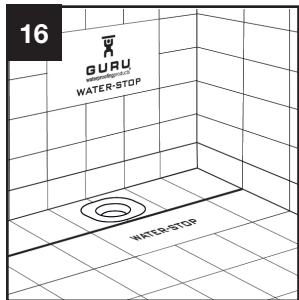
13. Place the bonding flange in top of the drainbody and press until it is flush.



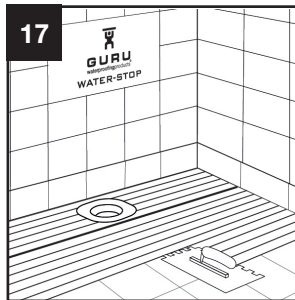
14. The appropriate installation will have a height difference between the tray and the drain location.



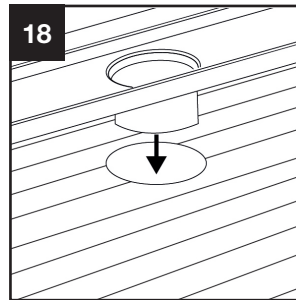
15. Flood test according to local code. If W-S Sealant has been used to install the corners, the test can be performed after 1 hour.



16. Waterproof the walls either with WATER-STOP sheet or W-S Board.

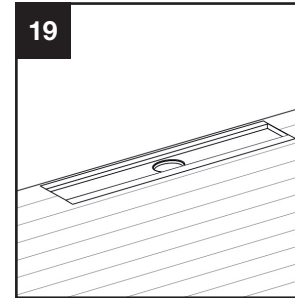


17. Apply thin set where the drain is to be placed to bond the pieces together.

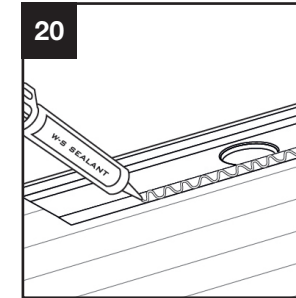


18. Press the drain to the required height based on tile used.

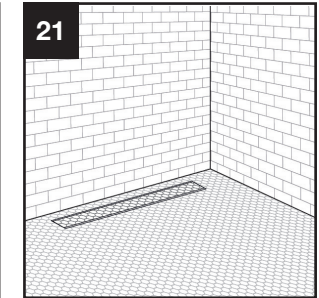
INSTALLATION FOR HD SHOWER TRAY - INTEGRA DRAIN



19. Drain must be flushed with the tray slope.



20. Apply a continuous bead on the shower channel flanges.



21. Once tiled and grouted add the hair trap and drain strainer.

Recommended: Use W-S Sealant provided to improve the installation.

GURU[®]
waterproofingproducts

GURU USA, L.L.C.

3409 NW 72 AVE UNIT C

33122 MIAMI

FLORIDA

Ph.: +1 800-596-7885

help@guru-usa.com

www.guru-usa.com

